

CERTIFICATE OF LOCATION OF GOVERNMENT CORNER

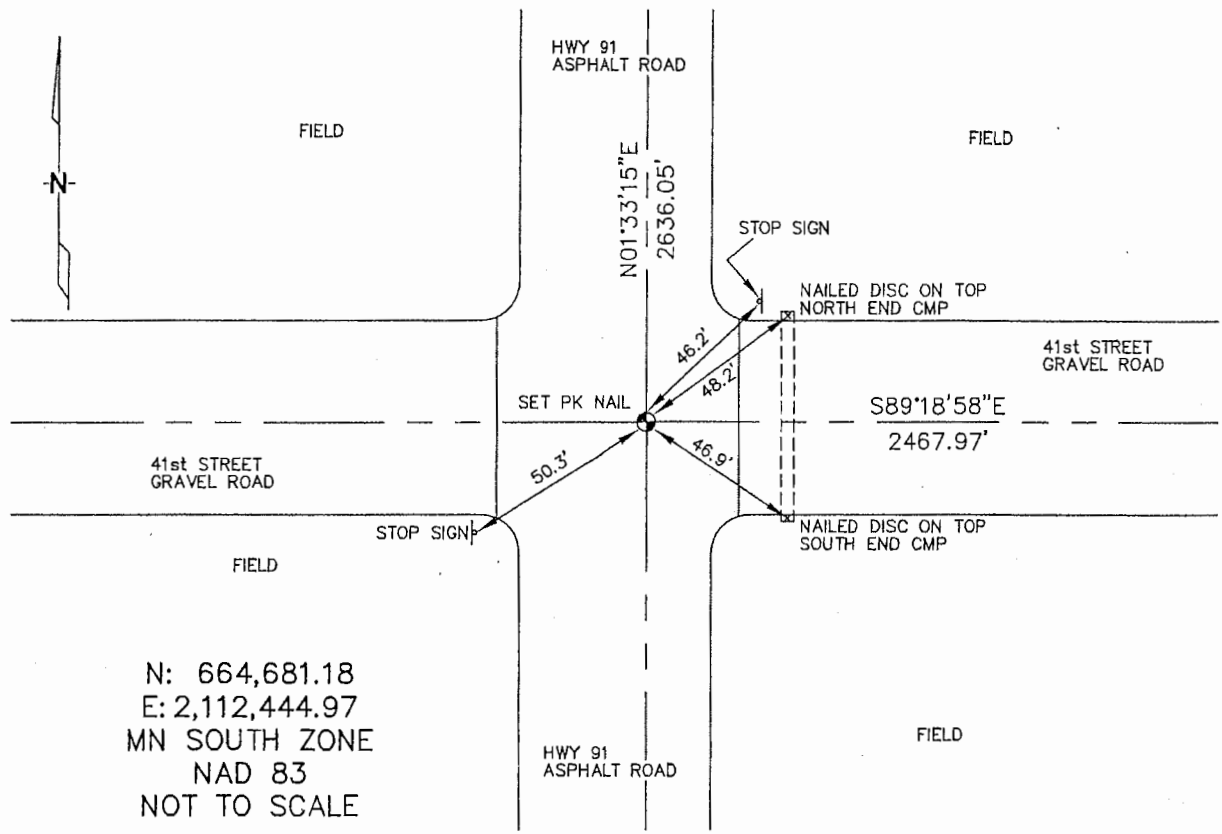
SOUTHWEST Corner of Section 7, Township 105, Range 42, 5TH P.M.

STATE OF MINNESOTA, County of MURRAY

At the corner location shown on the sketch :

- On _____ found _____
- left monument as found, lowered monument, removed monument (explain)
- On 3/21/2006 set A PK NAIL IN ASPHALT TO HARMONIZE WITH MN DOT R/W MAP FOR TRUNK HIGHWAY 91.

Sketch of reference ties



Statement of evidence relative to this corner location is on back page

I hereby certify that this document and the data contained herein was prepared by me or under my direct supervision.

Thomas Zeff 6/29/06
 Signature Date

Registration No. 44563

Land Surveyor, Professional Engineer

County Surveyor, County Engineer

OFFICE OF THE COUNTY RECORDER

County of _____

SEP 28 2006

I hereby certify that this document was filed in the Co. Recorders office at _____ .M. on the day of _____ A.D., 20

County Recorder *James V Johnson*

By _____, Deputy

DOCUMENT NO. _____

STATEMENT OF EVIDENCE:

SOUTHWEST CORNER, SECTION 7, T. 105 N., R. 42 W.,
MURRAY COUNTY, MINNESOTA

- 1858 W.J. Niely, US. Deputy Surveyor, monumented west range line.
- 10/02/1900 Murray Co., placed a government style mound and stake on corner; no ties.
- ? Date MN DOT R/W Map for Trunk Highway 91, sheet 7/1, retracement calls for corner in place at intersection of N-S-E-W roads. Found a 30" concrete monument in place; replacement certificate dated: 01/30/1953.
Ties: NE-48.51' to disc in culvert;
SE-46.9' to disc in culvert;
SW-53.31' to disc in culvert;
NW-55.95' to disc in culvert.
- 3/21/2006 Uiteig Engineers, Inc., Survey Crew, Brian Payne Party Chief, found nothing; set a PK nail in asphalt pavement so as to be in harmony with the MN DOT R/W Map for Trunk Highway 91.
Ties: NE-46.2' to "Stop Sign" post;
NE-48.2' to disc nailed into top of corrugated metal pipe;
SE-46.9' to disc nailed into top, of corrugated metal pipe;
SW-50.3' to "Stop Sign" post.
N-2636.05' to West 1/4 corner, Section 7;
E-2467.97' to South 1/4 corner, Section 7;